



Satisfy Professional's Needs

Finishing Sander
BO3710

Smooth Sanding with lower center of gravity



Ergonomically best possible gripping



fits user's hand perfectly, providing sure grip and easy handling whether in single- or double-handed operation.



Compact and lightweight design for easy handling and high maneuverability



Sturdy cylindrical Motor Housing

Rubberized soft grip provides more comfort and better control while minimizing hand fatigue and pain.



Available with Dust bag or Dust box



Also connectable to vacuum cleaners with hose



High dust extraction



Accessories

Punch plate
(For allowing dust extraction through the base)
Metal: Part No. 192989-7
Plastic: Part No. 194947-9



Pad complete
For use with Abrasive paper
Part No. 194929-1
Part No. *194930-6
*hook & loop type



Dust box assembly
Part No. 135246-0



use with Filter set
Part No. 195133-5
(w/o mark of origin)

Dust bag assembly
Part No. 135222-4

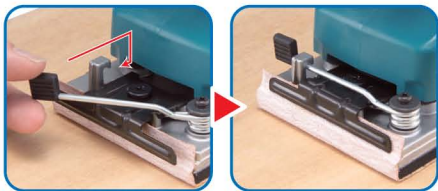


Hose Inner dia. 28mm
Including front cuff 22
Part No. A-34235



Easy-to-operate paper clamp

ensures easy installation/removal of paper with rolled clamber's edges.



Rigid aluminum foot with sponge sleeve

provides high durability and effective vibration-absorbing performance.



Finishing Sander



Double Insulation



Dust Collecting



BO3710

64

| | |
|-------------------------|------------------|
| Continuous rating Input | 190W |
| Pad size | 93 x 185mm |
| Abrasive paper size | 93 x 228mm |
| Orbits per minute (opm) | 11,000 |
| Dimensions (L x W x H) | 253 x 92 x 154mm |
| Net weight* | 1.6kg |
| Power supply cord | 2.0m |

*weight according to EPTA-Procedure 01/2003

Standard Equipment Abrasive Paper, Punch Plate, Dust Bag or Dust Box