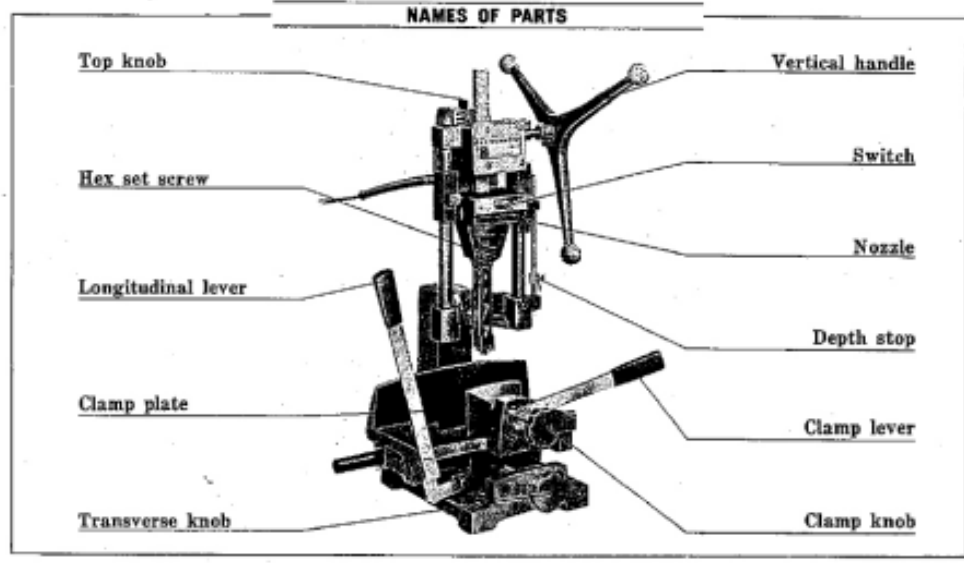


Makita Remembers... 30 Year Old Hollow Chisel Mortiser



Makita Electric Works Hollow Chisel Mortiser, Model 7400, is pictured here on the left. This 30 year old model is testament to Makita's exceptional standards. Mortise and tenon joints are very common in cabinet making. One of the most efficient methods of creating the mortises is with this machine. It can be set up in minutes and can cut a square hole in seconds. There are many brands of these machines available today and they are all competitively priced. As an alternative to purchasing a dedicated machine, you can also purchase adapters that will convert your drill press into a mortiser. These drill press attachments are more than adequate and will serve you well when doing tasks such as cabinet work.



The very old 7400 machine includes the following features: **1) Easy Lumber Feeding** - A lever is used for quick lengthwise feeding of lumber to the desired position. Use of auxiliary rollers makes it possible to work on lengthy lumber. **2) Easy To Carry** - Small-sized for ease of carrying from place to place. **3) Mortise Depth Adjustable** - A depth stop is provided for controlling mortises to your desired depth. **4) Easy To Mount The Square Chisel And Bit** - The square chisel and bit can be easily installed in place by means of one screw.

Are you ready for a Mortiser?

You have many options (including chain-drilling, hand cutting, and routing) for making mortises. Pictured on the right is the **Martlet DPA65 Mortising Attachment** which can be fitted to most drill presses on the market such as the Martlet MAR380AN Drill Press. How does it drill square holes - Yes, you can drill a square hole with a round bit. Here's how: An auger-type drill bit spins inside a hollow four-sided chisel. The bit itself locks into a drill chuck found on the machine. When you pull down on the machine's feed lever, the bit and chisel plunge simultaneously into your workpiece. Like all drill bits, the auger bit bores a hole and ejects the chips. Meanwhile, the four sharp edges of the chisel pare the wood around the bored hole into a square shape. The auger bit removes this waste, as well, through a chip ejection slot in the chisel.



MARTLET
Light Industrial Machinery

NEW!

LASER


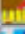





Let the blade sink in red.



Slide Compound Saw Model LS1013L Model LS1214L

Specifications

	LS1013L	LS1214L
Continuous rating Input:	1,430W	1,650W
Capacity:	at 90 degrees : 91mm x 310mm at 45 degrees : 91mm x 220mm	at 90 degrees : 115mm x 308mm at 45 degrees : 115mm x 218mm
Blade diameter:	255mm - 260mm	305mm
No load speed:	3,700rpm	3,200rpm
Dimensions (L x W x H):	715mm x 520mm x 640mm	723mm x 520mm x 718mm
Net weight:	22kg	24kg
Power supply cord:	2.5m	2.5m

-  Double Insulation
-  Laser Marker
-  Dust Collecting
-  Bevel Cutting 45LR
-  Electric Brake
-  Soft Start
-  Electronic Speed Control



Makita's Unique Laser Alignment System

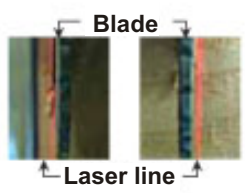


*Allows for easy cut line alignment.

*The laser guide is mounted on the blade case, minimizing the misalignment between the laser reference line and actual cut line.



*The laser line can be projected on either side of the blade.



*The laser guide can be turned on/off by an independent switch.



NEW!

The Chain Saw For You

Model UC4020A



Rubberized Soft Rear Grip

- Continuous rating Input: 1,800W
- Chain speed per minute: 800m
- Guide bar length: 400mm
- Chain Blade: pitch : 3/8" gauge : 0.050"
- Dimensions (L x W x H): 417 x 245x 198mm
- Net weight: 3.7kg
- Power supply cord: 0.3m

Large View Window of Oil Tank

Toolless Blade Change and Adjustment

Powerful Cutting Thanks to the High Torque Delivered by Heavy-Duty 1,800 W Motor.

Metal Spike Bumper

Flat External Design Provides increased stability in tool maintenance such as oiling/blade change.

Ergonomically Positioned Front Grip

Designed with the concept of "Easy Control and Maintenance"

Helpful Tips - Making the Cut

Felling is the act of cutting (or dropping) a tree. Look and look again at what you're going to be cutting - especially where it will fall. Always determine the angle the tree will fall and make the correct cuts. Falling trees tend to kick straight back. Plan a clear avenue to escape the falling tree, moving away from the trunk at an angle, not straight back. Clear debris that may cause you to trip. **Limbing** and **bucking** is what you do to the tree you just dropped. Just because the tree is down don't let down your guard. Taking off the limbs (limbing) and cutting the tree into manageable pieces (bucking) still requires caution.



Always work on the uphill side when cutting. See how the tree is balanced and which way it will move if a supporting branch is cut. Take special care to avoid binding and kickback that can occur when the weight shifts. Never cut with the saw's tip! Kickback can result.

Binding and **kickback** are dangerous situations you face when cutting. In either case the operator loses control of the saw.

●**Binding** is caused when the material being cut clamps down and stalls the cutting chain inside of the kerf (or cut).

●**Kickback** occurs when the saw tip touches another object or the blade is pinched. The saw is thrown back towards the user. A saw cutting at full throttle can kick back in one-tenth of one second - faster than a person can react.

Chain Saw Art

Chain saws do not always represent destruction. Working with hers on lime wood, Conny Siemsen removes the inner layers of her forms so that a "skin" is left, something like an outsize mask that almost seems cast from a body mask rather than hewn, thus achieving work that is at once monumental and delicate. Interesting works that can be seen at the Castle in Cape Town.



SPECIAL

ValuePac9

Offer valid until 30 June 2006 while stocks last. All prices include V.A.T at 14%



Cordless Percussion Driver Drill Model 8280DWPETC 14.4V including Makita Tool Kit **R1695**



Impact Drill 20mm Model HP2050 including Makita 9pc Drill Bit Set **R1095**



Jig Saw 720W Model 4340FCT including Makita Jig Saw Blade Pack **R1695**



R899 Box of Cut-Off Wheels



R1425 Circular Saw 190mm Model 5704R including 10m Extension Cord



Power Planer 82mm Model 1923HK including Makita Carry Case **R1795**



Angle Grinder 115mm Model 9557NB including Makita 5m Extension Cord **R795**

Safety Warning
This extension cord has been designed for use with double insulated power tools ONLY with a maximum power rating of 16Amp.



Portable Steel Cut-Off Machine 355mm Model 2414NB including 6 Makita Discs **R1795**

Safety Warning
This extension cord has been designed for use with double insulated power tools ONLY with a maximum power rating of 16Amp.



Compound Mitre Saw 255mm Model LS1040 including Makita Mitre Stand **R2695**



Jig Saw 400W Model 4324K including Makita Carry Case **R695**

Makita SAFE



Cordless Driver Drill 12V Model 6270DWALE including Makita ML120(12V) Torch **R1395**



Impact Drill Model HP1620 including Makita 7pc Wood Drill Bit Set **R695**



Dustless Sander Model BO4900 including Makita 1 Litre Flask **R1795**



2 Speed Hammer Drill Model HP2070 including Makita 9pc Drill Bit Set **R1395**



Random Orbital Sander Model BO5021 including Makita Mixed Sanding Disc Set **R895**



Angle Grinder 230mm Model 9069K including Makita 10m Extension Cord **R1095**

Safety Warning
This extension cord has been designed for use with double insulated power tools ONLY with a maximum power rating of 16Amp.



Compound Mitre Saw 305mm Model LS1214F including Makita Mitre Stand (See pic with LS1040) **R7895**



Plunge Type Router 6.35mm Model 3620 including Makita 1 Litre Flask **R1595**



Belt Sander Model 9401 including Makita Multi Tool **R2595**



Rotary Hammer 24mm SDS Plus Model HR2440 & HR2450 including Makita 5pc SDS Bit Set **R1595** HR2440 **R1695** HR2450

Kaap Agri Western and Northern Cape

Kaap Agri is a producer business in the form of a public company which, together with its subsidiaries, through its well established infrastructure, offers a wide range of products and services to agriculture in primarily the Western and the Northern Cape. Kaap Agri also applies its infrastructure and expertise to do business outside the agricultural sector. The competitive advantage of Kaap Agri lies in the expertise of its staff, its ability to negotiate on volumes and its diversification of risk over a wide range of products and services to a diverse clientele. Makita has been supplying Kaap Agri branches since 1969. Kaap Agri comprises of 31 branches which stock and promote Makita, the industrial power tool of choice.

Pictured on the right is a display at the Kaap Agri Malmesbury branch representing Makita and Maktec products. As you can see, a large amount of time and effort is set aside to prepare these displays.



In Focus 40 Years Of MAKITA Dedication

Gerald Stober

Gerald joined Rutherford on 2 May 1966, when the Branch was in Bree St, Cape Town. During the 40 years that he has been employed at Rutherford, he has seen the Branch move from Bree St, to Epping Industria, to Parow, to Paarden Eiland and back to Parow. The Rutherford Head Office also moved from Cape Town to Johannesburg. He has seen many colleagues come and go, and in fact there are still two staff members in the Branch who worked with him in the early seventies in Bree St!

Gerald joined the company employed in the stores. Since then, he has moved from the stores to Kardex, Goods Receiving and finally to his current position of Warehouse Manager. Gerald has been a senior member of the Branch Management Team for many years.



Gerald is married to Mildred, and they are proud parents of three wonderful children, Bernadette(42), Gerry (36) and Brian (31). Brian is also employed at Rutherford C T. They also have one grandson, Jesse. Gerald has been involved in all levels of local Soccer, as a player and administrator. The game also brought him one of his proudest moments when Gerry, his son, represented South Africa. Gerald's other "hobby" is his work, where he is often found on a Saturday, catching up, or giving his wife a break by being out of the house.

On Tuesday 2 May 2006, Gerald celebrated his 40th anniversary with Rutherford, a remarkable achievement. It is this sort of stability, support and dedication that ensures the ongoing strength and growth of our company, Gerald, we salute your milestone achievement.

Editors Notes

Please visit our new website at www.makita.co.za to enjoy many features, all that were discussed in the last edition of the MaktimesSA.



Best Regards
Makita SA Marketing Department

To unsubscribe from this monthly newsletter click here>>>