

Why Am I Injured?

Three of the major causes of power tool injuries are inattention through repetition, an unexpected event, and inexperience or overconfidence.

1 Inattention Through Repetition
Inattention through repetition is most likely to occur at a busy jobsite or in a production shop. Hurrying to beat deadlines increases the risk of accidents and injuries. No matter how competent and confident the operator, he or she must not allow himself or herself to become complacent. Pause deliberately after every few repeat operations to refocus on the task at hand and then proceed with renewed awareness.

Makita SAFE

2 Unexpected Events
Because most power tools operate at high speeds, when things happen, they tend to happen very quickly. A kickback situation can suddenly hurl a workpiece - or a portable tool itself - at the operator. Fingers might be drawn into the blade in some instances, or the tool may move toward fingers or other body parts that are in the wrong place at the wrong time. Build and use jigs (work helpers) and fixtures that keep the workpiece under control and hands well away from blades and cutters.

3 Inexperience and Overconfidence
Some people with many years of experience grow accustomed to working with their hands dangerously close to blades and cutters - sometimes without protective guards in place. A sudden grab of the workpiece or a kickback condition can cause fingers or hands to be pulled into the cutter almost instantaneously. Experience, although a good teacher, can lull us into overconfidence. The foolish risks we then become willing to take can inflict very painful lessons on us and our families. Risks like these are absolutely not worth it.

Learn A Term

Anti-Kickback Device - Safety feature incorporated into saws to minimize the possibility of kickback. Take note: May not work well when you're cutting smooth, hard surfaces. Also important in the prevention of kickback are proper set-up, a well-prepared job site, and well-informed, cautious operators.

Skipping - Dangerous reaction that often occurs when you try to use a sander with worn, unbalanced, or chipped sanding discs. The tool skips or glances off the workpiece. Firm control of the tool is important, but proper maintenance and service are also essential.

Overreaching - A big mistake often followed by big trouble. When using power tools, always make sure you've got good balance and are firmly planted on your own two feet.

Feather Board - A work helper used to firmly hold your workpiece against the fence or table of the tool when you're cutting. Helps keep hands from getting too close to dangerous blade or cutter areas.

Oops, I broke it again!

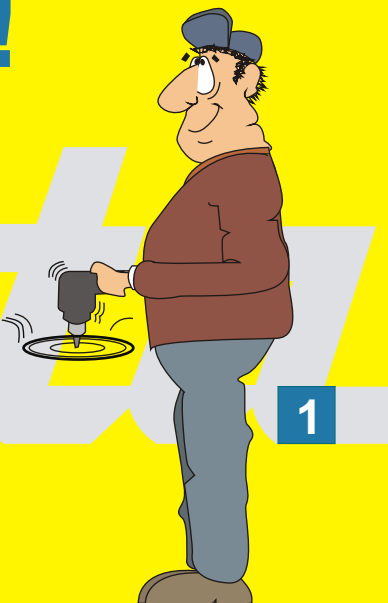
Many managers invest significant sums of money to purchase the highest-quality power tools for maintenance and construction work. A broken saw, drill or other power tool can wreak havoc on a project.

That's why you always should care for power tools with respect. Maintaining power tools is not complicated-it's just a matter of exercising common sense and developing habits that range from proper cleaning procedures to the appropriate use of a power source.

Misuse, abuse shortens tool life. One common power-tool enemy is the by-product you create with a tool's use. Foreign particles, such as sawdust, wood fragments and metal chips, build up. They harm power tools, so it is essential that you clean them regularly. Simply blow out the tools with an air hose after each use. This practice removes excess dust before it settles inside the tool.

Also, periodically check the wear of brushes in the tool and replace them according to the owner's manual. Most models allow easy access to check brush wear. When changing the brushes, determine if the tool requires new lubrication. The tool's performance and operation will be adversely affected if the brushes are not making complete contact with the armature.

Establishing a program of preventive maintenance should be another element in proper power-tool care. As a professional crafts person, you should bring your tools to the manufacturer's authorized service center every 6 to 12 months.



Ultimate Power And Speed

6980FDWAE Cordless Impact Driver

Newly designed hammer case materials increase maneuverability to a great extent.



Powerful Motor

- Externally accessible carbon brush extends motor life 2 times longer.
- Replaceable armature extends the tool life even beyond the motor life.



Ergonomically contoured palm-fitting soft grip.

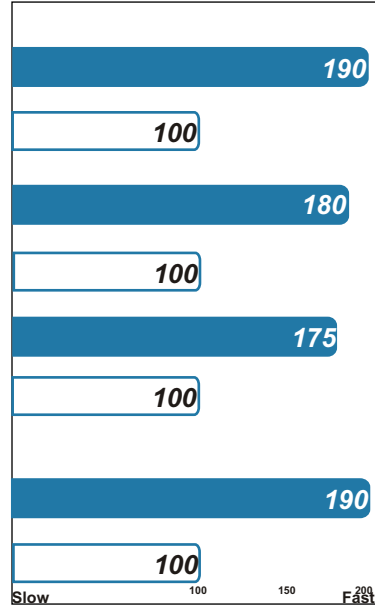
Back To Work Special

R2395
Save R200.00

Working Speed

| Drilling Screw | Makita 6980FD (2.6Ah) | 110 |
|-----------------------|------------------------|-----|
| - Course thread :41mm | Competitor "D" (2.0Ah) | 100 |
| - Work piece :Spruce | | |
| - Course thread :90mm | Makita 6980FD (2.6Ah) | 105 |
| - Work piece :Lawan | Competitor "D" (2.0Ah) | 100 |
| - Lag Bolt :1/4" | Makita 6980FD (2.6Ah) | 110 |
| - Work piece :Spruce | Competitor "D" (2.0Ah) | 100 |
| Making Hole | | |
| - Auger Bit :25mm | Makita 6980FD (2.6Ah) | 105 |
| - Work piece :Spruce | Competitor "D" (2.0Ah) | 100 |

Work Amount Per One Full Charged Battery Pack



-Numbers in chart above are relative values when setting "D's" capacity as 100. -It may differ under some conditions.



LED job light for excellent work efficiency in dimly - lit places.



Bumper of Phosphorescent (glow-in-the-dark) material.

Tools can easily be found, even if left in dimly-lit places.



Extremely compact, only 163mm.

| Specifications | 6980FD | Competitor "D" |
|-----------------------------|--------------|----------------|
| Max. Fastening Torque | 125Nm | 115Nm |
| No Load Speed | 0 - 2,600rpm | 0 - 2,100rpm |
| Impact Per Minute | 0 - 3,200bpm | 0 - 3,000bpm |
| LED Job Light | Yes | No |
| Externally accessible brush | Yes | No |
| Net Weight | 1.6kg | 1.7kg |
| Voltage | 12V | 12V |

Unrivaled In This Class!

Portable Holeboring/Milling

MM32 Magnetic Drill Press

How To Use

1. Simply mark the centre of your hole. Centre - punching is a good idea but not essential.

2. Position the Pilot Rod inside the cutter and fasten the cutter to the drill using the 4mm Allen Key supplied. The design makes it impossible to fit a cutter incorrectly.

3. Place the Pilot Rod over the mark and switch on the electromagnetic base. The Makita Minibor should be on a flat metal surface of not less than 6mm thick to achieve over 1,450kg of clamping force. Where applicable, fix the safety chain.

4. Switch on the Power tool and simply drill the hole, applying small amounts of cutting oil as required. The Makita Minibor will cut **quickly** and very **accurately** - **DO NOT** apply undue pressure...this will **ONLY** serve to blunt the cutters.



The Makita **MM32 Minibor** is an earthed, 3-core, type machine based on the Makita 6013BR power tool motor that is also double insulated. Standard equipment includes a safety chain and carabina hook, to protect the operator, should the power supply fail for any reason. Any main power interruption automatically trips a 'fail-safe' switch and isolates the drill. This prevents the unit restarting unexpectedly when power is restored.

A perspex safety guard also is fitted to protect against swarf. Simple clear controls are all positioned on one side of the unit for easy access.

Weighing just 14kg the MM32 is lightweight enough for one man operation - even overhead, and it is capable of exerting a massive 1,450kg clamping force. Compact design means you can work in tight or awkward corners.

The formula cutting oil (supplied as standard) reduces heat build-up, speeds cutting time and extends cutter life. Cutting oil is completely environmentally friendly; non-polluting and non-flammable.

As the cutter bores through the metal, the sprung pilot rod gives way until cutting is completed when the action of the spring immediately ejects the slug.



Bolt & Nut Centre

Cape Town

Bolt & Nut Centre was established in 1976 and is located at 56 Neptune Street, Paarden Eiland, Cape Town. They opened a showroom area in February 2005 for customers to see the various products on offer, which includes a very respectable Makita range.

The store is managed by Marnitz van der Merwe, who is very "hands on" and gets involved where he can. Deodat Kasner is the Power Tool Manager and together they endeavour to find new ways of keeping their customers, who span from local areas all the way up to Namibia, happy and satisfied.

There are four sales representatives, four counter sales people, and one telesales person. These employees are able to assist customers with ease, especially with regards to Makita, as many of them have attended the Makita Training Academy.

Bolt & Nut Centre carries approximately twenty thousand stock items and Marnitz says, "The Makita Training Course has proved to be most valuable indeed. The 'hands on' experience plus the theory has led to people becoming more familiar and confident when selling Makita Power Tools. This has seen increased sales and profits. The backup and service of such a first class product makes Makita a pleasure to sell and Rutherford a wonderful company to deal with."



Marnitz van der Merwe and Deodat Kasner are pictured above with the Makita sponsored Supercar, used by Bolt & Nut as a means of "branding", which they find works well as a very effective medium.

Tel: (021)511-2087

Fax: (021)511-7552

Bolt & Nut Centre supply not only power tools but specialised engineering tools, automotive equipment, spanners, hand tools, lubricants etc.

Makita Training Schedules 2006

February: 14th, 15th, 16th.

March: 14th, 15th, 16th.

April: No training due to all Easter Holidays.

May: 23rd, 24th, 25th.

June: 20th, 21st, 22nd.

Book Now!

Three day course includes a free lunch each afternoon!

Dates on the left are Joburg only.

Lookout for future MakTimesSA

Editions for Cape Town and

Durban schedules or contact:

Gauteng: (011)878-2600

Cape Town: (021)932-0568

Durban: (031)717-6400

Course only available to Makita stockists.

The
Makita
Academy

Training Cost = **R0**

Makita Power Tool Experience = **Priceless!**

Back To Work Specials

OFFER VALID UNTIL
24 MARCH 2006
WHILE STOCKS LAST



Circular Saw
165mm
Model 5604R
R1165
Save R130.00



Angle Grinder
230mm
Model 9059
R1545
Save R150.00



Rotary Hammer
20mm
Model HR2022
R1095
Save R130.00



Cut-Off Saw
355mm
Model 2414NB
R1795
Save R200.00



Impact Drill
20mm
Model HP2020
R1525
Save R170.00



Hammer Drill
20mm 2Speed
Model HP2051
R1255
Save R140.00



Angle Grinder
180mm
Model GA7010C
R1445
Save R150.00



Angle Grinder
230mm
Model GA9010C
R1445
Save R150.00



**Slide Compound
Mitre Saw**
Model LS1013
R7195
Save R800.00



Angle Grinder
115mm
Model 9554NB
R715
Save R80.00



Jig Saw
18mm
Model 4324K
R715
Save R80.00



Jig Saw
26mm
Model 4340FCT
R1695
Save R200.00



**Finishing
Sander**
Model BO3700
R625
Save R70.00



Power Planer
82mm
Model 1902K
R1350
Save R145.00



Sander Polisher
180mm
Model 9227CB
R1895
Save R200.00



Blower
Model UB1100
R630
Save R65.00



**Drywall
Screwdrivers**
Models 6823
6824
6825
R1165
Save R130.00



Impact Drill
13mm 18V
Model 8444DWAE
R2695
Save R300.00

BonusPac

We are proud to announce the launch of the new Makita BonusPac.

We are offering both the Makita 3612 and 3612C Industrial Routers each with a free Cordless In-Line Screwdriver Kit. This kit is comprised of a fully adjustable 4.8V Cordless Screwdriver with a charger, neatly housed in a moulded carry case, which includes an assortment of 77 bits with a magnetic bit holder.

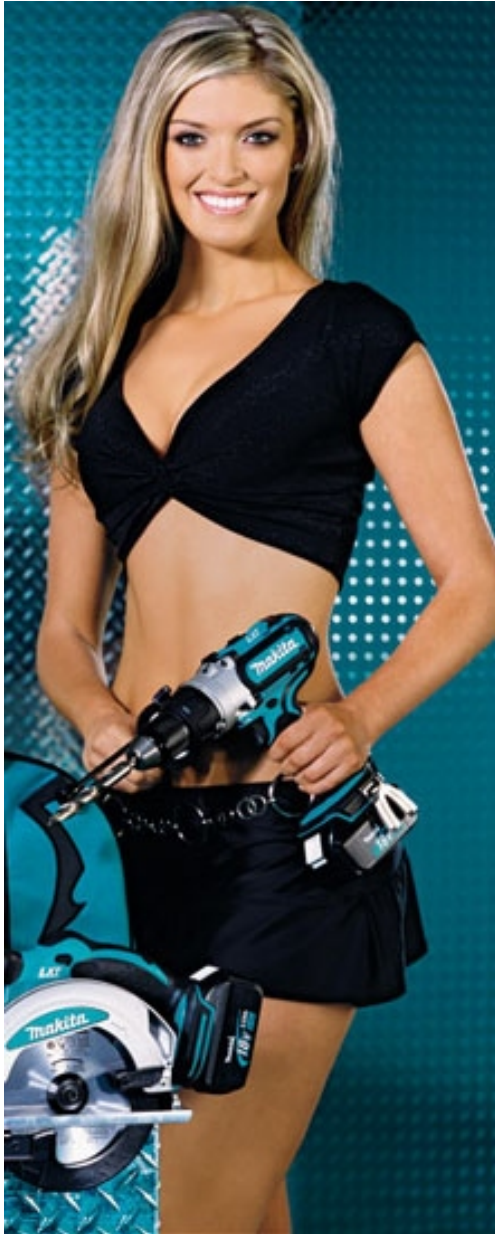
This Cordless Screwdriver Kit is not for resale and is not part of the normal Makita product range. It is only available as a bonus added item with the abovementioned routers.

This offer will be available for the next 9 months while stock lasts.

BonusPac



Miss Makita 2006 Ashleigh Erwin



Makita Power Tools has been selecting almost 30 years and it's a very successful way of promoting our products.

A new Miss Makita is chosen every year and these girls tour the world touting Makita Tools. In the process, they generate an enormous following and become celebrities wherever they visit. The title of Miss Makita is held in the highest regard and sought after by established and aspiring models. This year's title went to the American Ashleigh Erwin.

Hometown: San Diego, CA, United States

Education: University of California, Santa Barbara

Interests: All arts (performing arts, drawing, acting, theater), running, skiing, film, traveling & anything outdoors.

Favorite Quotes: "Be who you are, say what you feel, because those who mind don't matter and those who matter, don't mind." (Dr. Seuss); "Don't be afraid to be yourself; Be afraid not to."

Miss Makita now for



WIN! WIN! WIN!

BO3700 Finishing Sander

Get a friend to email the Makita Marketing Team at january@rutherford.co.za requesting to receive this free e-newsletter. Your details will be entered into the competition to win this wonderful prize. Remember to tell your friend to include your email address for both of you to stand a chance.

Competition closes on the 10th February 2006 and the winner will be contacted directly by the Makita Team.

Editors Notes

We are particularly thrilled about what 2006 holds in store for Makita and Maktec power tools. This promises to be an exciting year filled with opportunities for us, as economic indicators predict further growth, and customers are continually demanding better quality, more efficient power tools.

To meet these challenges the Makita Academy courses for 2006 will place emphasis on increased power tool productivity and user safety. We look forward to increasing the product range and distribution to meet the growing demand for the Makita brand in the industrial power tool market.

The ever expanding Maktec range of power tools is available to meet the demand for quality power tools at affordable prices in the lower end of the industrial market. Are you ready for 2006?

Best Regards
Makita SA Marketing Department

To unsubscribe from this monthly newsletter click here>>>