

# SPARE PARTS LIST

MODEL NO. LS1216L

ITEM	PART NO.	DESCRIPTION	QTY	NOTE
001	265995-6	TAPPING SCREW 4X18	2	
002	450999-3	REAR COVER	1	
003	631866-3	CONTROLLER	1	
004	265995-6	TAPPING SCREW 4X18	2	
005	665865-3	POWER SUPPLY CORD 1.0-2-2.5	1	
006	687052-4	STRAIN RELIEF	1	
007	866948-4	LS1216L NAME PLATE	1	
008	266329-6	TAPPING SCREW 5X60	2	
009	318471-0	MOTOR BRACKET	1	
010	451194-8	BAFFLE PLATE	1	
011	961057-5	RETAINING RING S-17	1	
012	211275-8	BALL BEARING 6003DDW	1	
013	240001-8	FAN 80	1	
014	517844-6	ARMATURE ASSEMBLY 240V INC. 13,15,16	1	
015	681642-5	INSULATION WASHER	1	
016	210067-2	BALL BEARING 6000ZZ	1	
017	596359-6	FIELD ASSEMBLY 240V	1	
018	158958-8	MOTOR HOUSING COMPLETE	1	
019	643650-4	BRUSH HOLDER CAP 6.5-13.5	2	
020	181044-0	CARBON BRUSH CB-153	1	
021	911948-0	PAN HEAD SCREW M6X80 WITH WR	4	
022	638652-3	LASER SWITCH UNIT	1	
023	265995-6	TAPPING SCREW 4X18	6	
024	158981-3	HANDLE COVER COMPLETE	1	
025	631908-3	POWER SUPPLY CIRCUIT	1	
026	451003-1	SWITCH LEVER	1	
027	650618-3	SWITCH TG72B-1	1	
028	416356-5	LOCK-OFF LEVER	1	
029	231026-3	COMPRESSION SPRING 4	1	
030	265995-6	TAPPING SCREW 4X18	2	
031	140049-9	HANDLE COMPLETE	1	
032	265995-6	TAPPING SCREW 4X18	2	
033	451037-4	SWITCH BUTTON	1	
034	451000-7	LEAD COVER HOLDER	1	
035	265995-6	TAPPING SCREW 4X18	1	
036	451199-8	LEAD COVER	1	
037	231928-3	RING SPRING 8	1	
038	256633-1	PIN 6	1	
039	231240-1	COMPRESSION SPRING 7	1	
040	911113-1	PAN HEAD SCREW M4X10	2	
041	262001-8	URETHANE RING 5	1	
042	265717-4	SCREW M6X43	1	
043	266488-6	HEX SOCKET HEAD BOLT M8X20	1	
044	922332-4	HEX. SOCKET HEAD BOLT M6X20	1	
045	687042-7	STRAIN RELIEF	1	
046	266026-4	TAPPING SCREW BIND CT 4X12	1	
047	419277-0	DUST NOZZLE	1	
048	213460-9	O RING 35	1	
049	266321-2	H.S.SET SCREW(FLAT POINT)M6X16	1	
050	922331-6	HEX. SOCKET HEAD BOLT M6X20	1	
051	253804-1	FLAT WASHER 6	1	
052	257163-5	RING 6	1	
053	140164-9	LINK PLATE COMPLETE	1	
054	257163-5	RING 6	1	
055	253804-1	FLAT WASHER 6	1	
056	961018-5	STOP RING E-5	1	
057	911113-1	PAN HEAD SCREW M4X10	1	
058	346050-4	GUARD HOLDER	1	
059	231675-6	TORSION SPRING 11	1	
060	*****	*****	***	*****

# SPARE PARTS LIST

MODEL NO. LS1216L

ITEM	PART NO.	DESCRIPTION	QTY	NOTE
061	325645-6	GUARD SHAFT	1	
062	*****	*****	***	*****
063	140148-7	BLADE CASE COMPLETE	1	
064	210005-4	BALL BEARING 608DDW	1	
065	961052-5	RETAINING RING S-12	1	
066	253744-3	FLAT WASHER 12	1	
067	261104-5	RUBBER WASHER 12	1	
068	253744-3	FLAT WASHER 12	1	
069	227550-2	SPIRAL BEVEL GEAR 32	1	
070	254001-2	WOODRUFF KEY 4	1	
071	266026-4	TAPPING SCREW BIND CT 4X12	2	
072	451002-3	GREASE HOLDER	1	
073	227701-7	HELICAL GEAR 14	1	
074	227702-5	HERICAL GEAR 27	1	
075	216024-8	STEEL BALL 4	1	
076	325643-0	GEAR SHAFT	1	
077	210067-2	BALL BEARING 6000ZZ	1	
078	210005-4	BALL BEARING 608DDW	1	
079	961055-9	RETAINING RING S-15	1	
080	227703-3	HERICAL GEAR 28	1	
081	442147-8	GASKET	1	
082	911223-4	PAN HEAD SCREW M5X16	3	
083	210005-4	BALL BEARING 608DDW	1	
084	267010-2	FLAT WASHER 5	1	
085	942101-7	SPRING WASHER 5	1	
086	931202-6	HEX. NUT M5	1	
087	285847-5	BEARING RETAINER 14-23	1	
088	158957-0	BEARING BOX COMPLETE	1	
089	211236-8	BALL BEARING 6002DDW	1	
090	325644-8	SPINDLE	1	
091	285732-2	BEARING RETAINER 51	1	
092	265034-2	+ COUNTERSUNK HEAD SCREW M5X16	2	
093	*****	*****	***	*****
094	224433-7	OUTER FLANGE 62	1	
095	*****	*****	***	*****
096	*****	*****	***	*****
097	233554-4	TORSION SPRING 45	1	
098	424190-9	CUSHION	1	
099	265985-9	HEX.SOCKET HEAD BOLT M6	1	
100	346048-1	CENTER COVER	1	
101	253932-2	WAVE WASHER 10	1	
102	344539-6	CENTER WASHER	1	
103	346047-3	CENTER PLATE	1	
104	266034-5	TAPPING SCREW CT 4X16	1	
105	266020-6	TAPPING SCREW 4X12	2	
106	941051-3	FLAT WASHER 4	2	
107	424193-3	ROLLER	2	
108	451197-2	SAFETY COVER B	1	
109	266026-4	TAPPING SCREW BIND CT 4X12	3	
110	418104-8	LENS	1	
111	419378-4	BLOCK B	1	
112	911003-8	PAN HEAD SCREW M3X6	2	
113	231664-1	TORSION SPRING 9	1	
114	266318-1	H.S.SET SCREW(FLAT POINT)M4X6	1	
115	266306-8	SHOULDER SCREW M5	1	
116	419379-2	BLOCK C	1	
117	233471-8	COMPRESSION SPRING 6	1	
118	638651-5	LASER CIRCUIT COMPLETE	1	
119	231664-1	TORSION SPRING 9	1	
120	266318-1	H.S.SET SCREW(FLAT POINT)M4X6	1	
121	266229-0	H.S.SET SCREW(CUP POINT)M5X8	2	

# SPARE PARTS LIST

MODEL NO. LS1216L

ITEM	PART NO.	DESCRIPTION	QTY	NOTE
122	451195-6	LASER COVER	1	
123	266034-5	TAPPING SCREW CT 4X16	2	
124	451038-2	PROTECTOR	1	
125	265753-0	THUMB SCREW M5X24	1	
126	253807-5	FLAT WASHER 5	1	
127	265026-1	+ PAN HEAD SCREW M4	2	
128	941102-2	FLAT WASHER 5	2	
129	233267-7	COMPRESSION SPRING 7	2	
130	941102-2	FLAT WASHER 5	2	
131	272261-4	LEVER 45	2	
132	325651-1	JOINT	2	
133	253804-1	FLAT WASHER 6	2	
134	140160-7	UPPER FENCE R COMPLETE	1	
135	346058-8	GUIDE PLATE	2	
136	*****	*****	**	*****
137	265783-1	THUMB SCREW M6X18	1	
138	*****	*****	**	*****
139	922443-5	H.S.H.BOLT M8X25 WITH WR	4	
140	256226-4	PIN 4	2	
141	266264-8	H.S.SET SCREW(FLAT POINT)M5X6	2	
142	265783-1	THUMB SCREW M6X18	1	
143	*****	*****	**	*****
144	140156-8	UPPER FENCE L COMPLETE	1	
145	346049-9	STOPPER ARM	1	
146	253948-7	WAVE WASHER 8	1	
147	253835-0	FLAT WASHER 8	1	
148	251267-5	+ PAN HEAD SCREW M6	1	
149	451202-5	SLEEVE 17	1	
150	323740-6	ROD 16	1	
151	271601-3	KNOB 20	1	
152	213011-8	O RING 7	1	
153	322629-5	STOPPER PIN	1	
154	233542-1	TORSION SPRING 40	1	
155	266026-4	TAPPING SCREW BIND CT 4X12	1	
156	158962-7	STOPPER LEVER COMPETE	1	
157	*****	*****	**	*****
158	265783-1	THUMB SCREW M6X18	1	
159	231240-1	COMPRESSION SPRING 7	1	
160	266034-5	TAPPING SCREW CT 4X16	1	
161	140155-0	ARM COMPLETE	1	
162	*****	*****	**	*****
163	266208-8	H.S.SET SCREW(CUP POINT)M6X8	2	
164	266026-4	TAPPING SCREW BIND CT 4X12	1	
165	687042-7	STRAIN RELIEF	1	
166	911113-1	PAN HEAD SCREW M4X10	1	
167	252130-5	HEX. LOCK NUT M10-17	1	
168	253024-7	FLAT WASHER 10	2	
169	216413-7	THRUST NEEDLE CAGE 1024	1	
170	451019-6	LEVER 105	1	
171	265589-7	HEX BOLT M10	1	
172	253024-7	FLAT WASHER 10	1	
173	415208-7	RELEASE BUTTON	1	
174	233031-6	COMPRESSION SPRING 12	1	
175	266488-6	HEX SOCKET HEAD BOLT M8X20	1	
176	318405-3	STOPPER	1	
177	961052-5	RETAINING RING S-12	1	
178	253744-3	FLAT WASHER 12	1	
179	231646-3	TORSION SPRING 14	1	
180	262158-5	RUBBER RING 9	1	
181	346071-6	PLATE	1	
182	266488-6	HEX SOCKET HEAD BOLT M8X20	1	

# SPARE PARTS LIST

MODEL NO. LS1216L

ITEM	PART NO.	DESCRIPTION	QTY	NOTE
183	451200-9	ARM COVER	1	
184	266034-5	TAPPING SCREW CT 4X16	1	
185	343678-9	POINTER	1	
186	266034-5	TAPPING SCREW CT 4X16	1	
187	158964-3	ARM HOLDER COMPLETE	1	
188	266488-6	HEX SOCKET HEAD BOLT M8X20	1	
189	961011-9	STOP RING E-4	1	
190	451044-7	CAM	1	
191	325656-1	ROD 6	1	
192	272262-2	LEVER 22	1	
193	911113-1	PAN HEAD SCREW M4X10	1	
194	234122-6	COMPRESSION SPRING 6	1	
195	325865-2	LOCK PIN 8	1	
196	232250-1	LEAF SPRING	1	
197	325646-4	CENTER SHAFT	1	
198	451039-0	POSITION PLATE	1	
199	451070-6	ARM HOLDER COVER	1	
200	266034-5	TAPPING SCREW CT 4X16	1	
201	158967-7	SQUARE ROD COMPLETE	1	
202	925251-3	HEX.BOLT M5X30	2	
203	266026-4	TAPPING SCREW BIND CT 4X12	6	
204	451201-7	KERF BOARD	2	
205	265585-5	HEX BOLT M8X45	1	
206	253762-1	FLAT WASHER 8	1	
207	140166-5	TURN BASE COMPLETE	1	
208	266026-4	TAPPING SCREW BIND CT 4X12	1	
209	451009-9	INDICATION PLATE	1	
210	451011-2	RACK BLOCK	1	
211	266385-6	TAPPING SCREW 4X14	1	
212	941051-3	FLAT WASHER 4	1	
213	266026-4	TAPPING SCREW BIND CT 4X12	1	
214	346052-0	SLIDE LOCK PLATE	1	
215	286275-7	CAP	1	
216	961013-5	STOP RING E-7	1	
217	313165-2	CAM	1	
218	231131-6	COMPRESSION SPRING 11	1	
219	267047-9	FLAT WASHER 10	1	
220	273666-1	GRIP 50	1	
221	318410-0	PIN HOLDER	1	
222	266034-5	TAPPING SCREW CT 4X16	4	
223	451010-4	LOCK LEVER	1	
224	345272-3	LOCK LEVER PLATE	1	
225	266034-5	TAPPING SCREW CT 4X16	2	
226	266505-2	H.S. BINDING HEAD SCREW M6X14	1	
228	346094-4	MITER LOCK PLATE A	1	
229	234104-8	COMPRESSION SPRING 13	1	
230	266306-8	SHOULDER SCREW M5	1	
231	231325-3	COMPRESSION SPRING 6	1	
232	256158-5	PIN 3	1	
233	325695-1	LOCK PIN 6	1	
234	158968-5	LINEAR BEARING BOX COMPLETE	1	
235	451018-8	SPUR GEAR 43	1	
236	232249-6	LEAF SPRING	1	
237	266026-4	TAPPING SCREW BIND CT 4X12	1	
238	922441-9	HEX. SOCKET HEAD BOLT M8X25	3	
239	421845-7	FOOT	4	
240	267195-4	FLAT WASHER 4	4	
241	266026-4	TAPPING SCREW BIND CT 4X12	4	
242	*****	*****	***	*****
243	810495-7	CAUTION LABEL	1	
246	817283-3	CAUTION LABEL	1	

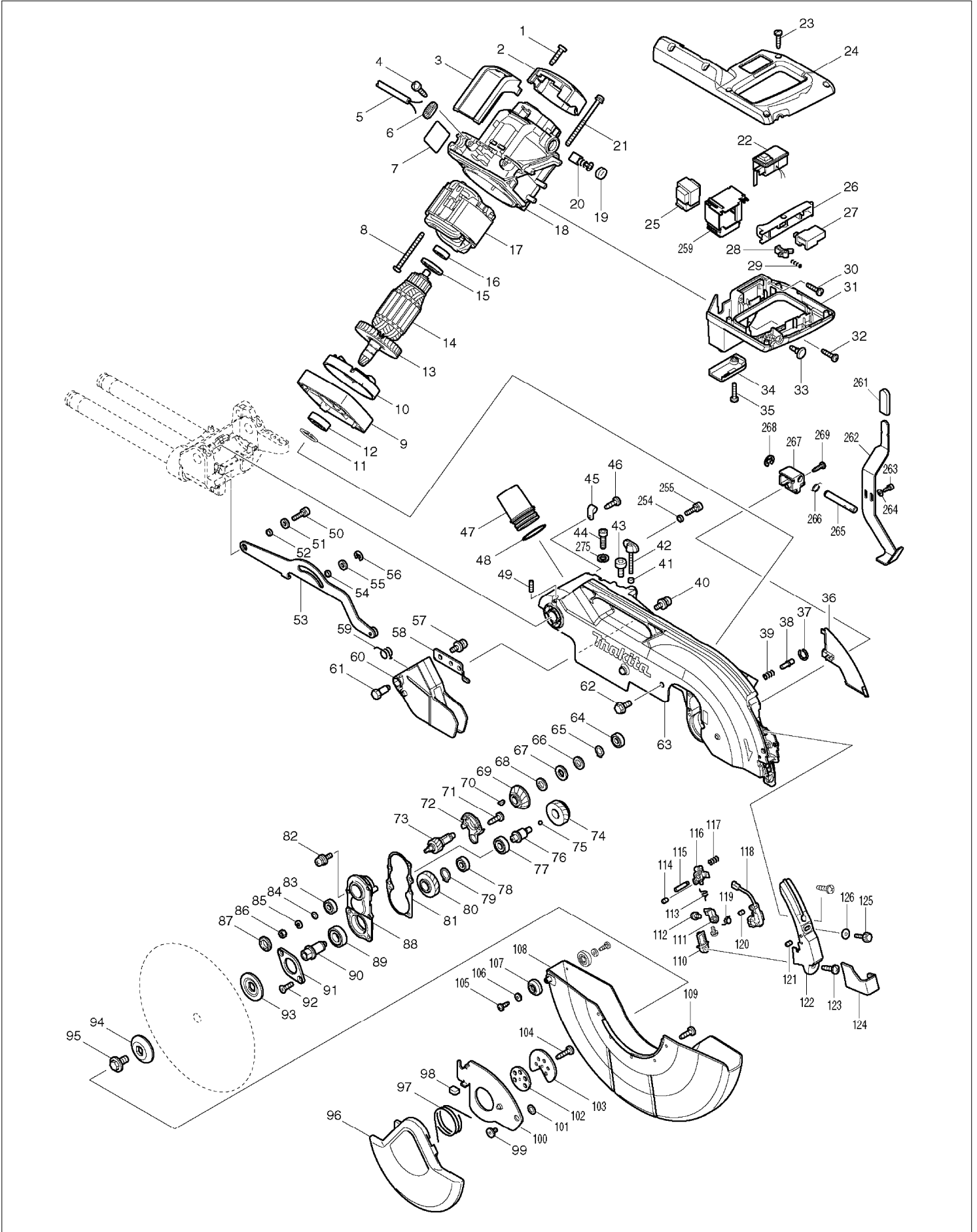
# SPARE PARTS LIST

MODEL NO. LS1216L

ITEM	PART NO.	DESCRIPTION	QTY	NOTE
247	816920-6	MITER SCALE PLATE	1	
248	451012-0	SLIDE PLATE	1	
249	266026-4	TAPPING SCREW BIND CT 4X12	3	
250	266034-5	TAPPING SCREW CT 4X16	1	
251	232075-3	LEAF SPRING	1	
252	817283-3	CAUTION LABEL	1	
254	257785-1	SLEEVE 6	1	
255	922226-3	HEX. SOCKET HEAD BOLT M5X18	1	
256	216024-8	STEEL BALL 4	2	
257	253874-0	FLAT WASHER 4	1	
258	266042-6	TAPPING SCREW BIND CT 4X20	1	
259	451412-4	CASE	1	
261	421589-9	CAP	1	
262	346097-8	LOCK LEVER	1	
263	922111-0	HEX. SOCKET HEAD BOLT M4X10	2	
264	941051-3	FLAT WASHER 4	2	
265	325664-2	ROD 8	1	
266	231633-2	TORSION SPRING 8	1	
267	451129-9	ROD HOLDER	1	
268	961012-7	STOP RING E-6	1	
269	266034-5	TAPPING SCREW CT 4X16	2	
271	140165-7	MITER LOCK PLATE B COMPLETE	1	
272	256246-8	PIN 6	1	
273	346096-0	PLATE	1	
274	266034-5	TAPPING SCREW CT 4X16	2	
275	942151-2	SPRING WASHER 6	1	
276	266318-1	H.S.SET SCREW(FLAT POINT)M4X6	1	
277	253313-0	THIN WASHER 14	1	
280	346474-4	PLATE	1	
281	266026-4	TAPPING SCREW BIND CT 4X12	1	
282	424438-9	DUST FILTER	1	
283	266318-1	H.S.SET SCREW(FLAT POINT)M4X6	1	
A01	122852-0	DUST BAG ASS'Y	1	
A02	122854-6	WISE ASS'Y	1	
A03	762001-3	TRIANGULAR RULE	1	
A04	783208-8	HEX. WRENCH 2.5	1	
A05	265786-5	SCREW M5X16	2	
A06	325673-1	HOLDER 200	2	
A07	*****	*****	***	*****
A08	B-04606	TCT SAW BLADE 305X30X70T	1	
E01	257262-3	RING 16	1	
E02	651941-9	SWITCH V-15-2A5	1	
E03	654531-7	TERMINAL BLOCK 2P	1	
E05	410047-0	WRENCH HOLDER 5.6	1	

# SERVICE DRAWING

MODEL NO. LS1216L



# SERVICE DRAWING

MODEL NO. LS1216L

