

# Optional Accessories

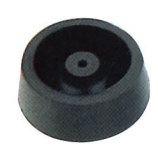
**1. Dust extractor attachment**  
Part No. 193472-7  
Use with Hose 28-1.5 Part No. 192278-0



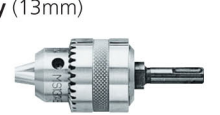
**2. Dust cup set** Part No. 194580-7  
Use with Grip base set Part No. 194582-3



**3. Dust cup**  
Bit dia 6-14.5mm Part No. 421342-3  
Bit dia 12-16mm Part No. 421664-1  
(Protects operator from dust and debris)



**4. Drill chuck assembly** (13mm)  
Part No. 122574-2  
Use with Chuck key  
Part No.763432-9



**5. Chuck adapter assembly**  
Part No. 122573-4  
With screw M6 x 22



**6. Battery protector**  
Part No. 194649-7



**8. Hammer service kit** Part No. 188582-3



## Cordless Combination Hammer

Variable Speed

Reversing

Electric Brake

Torque Limiter

Dust Collecting

SDS-Plus Shank

Built-in Job Light

Carrying Case

BHR202ZK 20mm		432
Capacity	Concrete : 20mm Steel : 13mm Wood : 26mm	
Impacts per minute	0-4,000ipm	
No load speed	0-1,100r/min	
Dimensions (L x W x H)	358 x 84 x 259mm	
Net weight	3.2kg	
Voltage	18V	
Battery and Charger sold Separately		
Tool does not come with bit		

Items of standard equipment and specifications may differ by country or area.



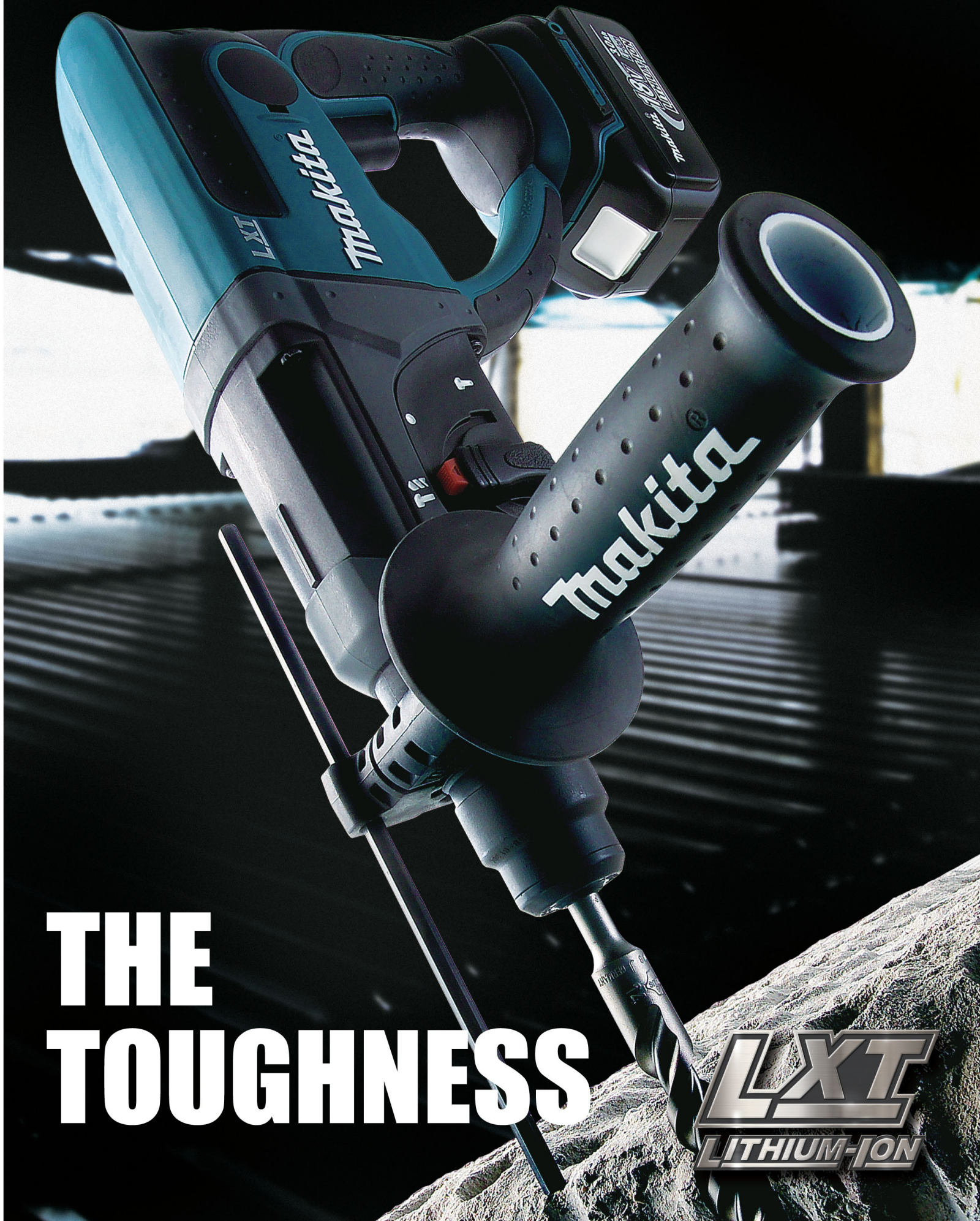
Satisfy Professional's Needs

# Cordless Combination Hammer

**BHR202ZK 20mm**

SDS-Plus Shank

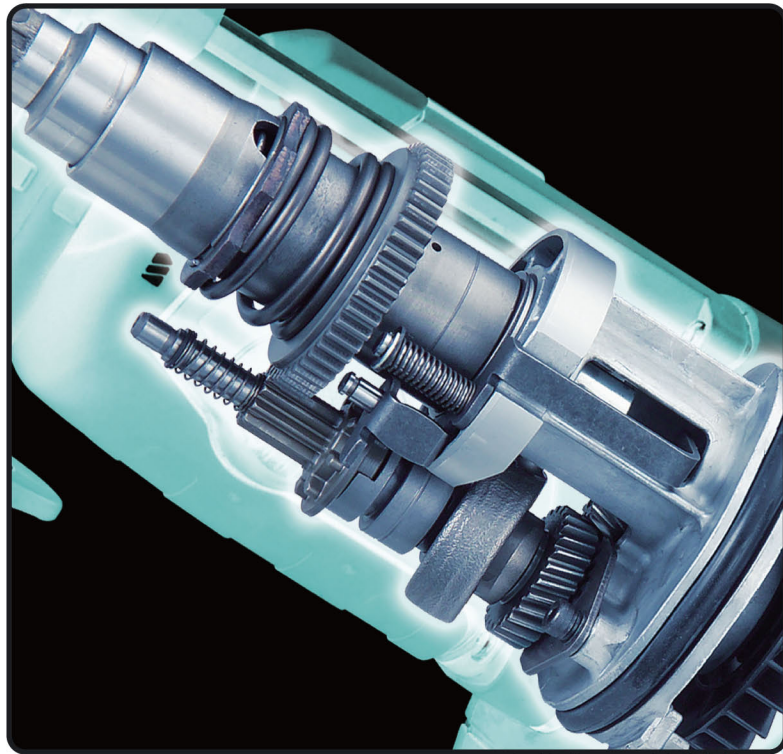
**18V 3.0Ah LITHIUM-ION**



# THE TOUGHNESS







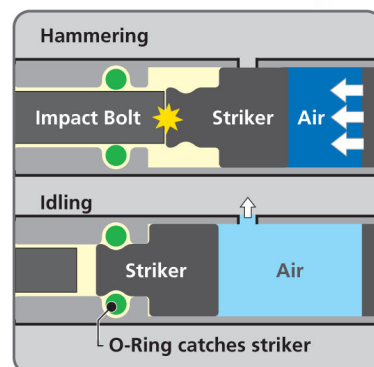
# DRASTICALLY ENHANCED DURABILITY

- /// Added durability to impact bolt
- /// Large seal ring eliminates grease leakage from matching surface between inner housing and gear housing.

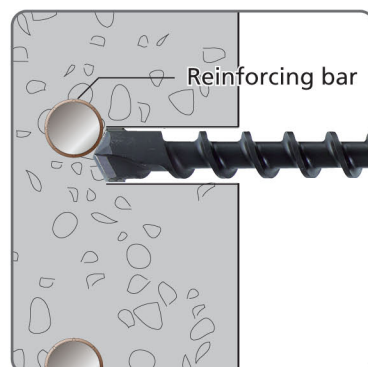
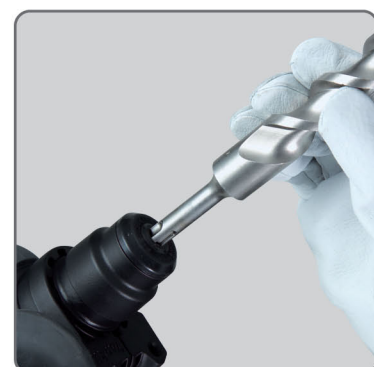
Light weight  
at only  
**3.2kg**



**Cordless Combination Hammer**  
**BHR202** **18V 3.0Ah LITHIUM-ION**



**No hammering when idling**  
ensures machine's long life.



**Bumper**  
protects the surface of workpiece and machine.

**Rubberized soft grip**  
provides more control and comfort.

**SDS-Plus shank**  
(Tool does not come with bit.)

**LED job light**  
with afterglow function

**Unique rubber joint construction**  
suppresses the transmission of vibration to battery terminals, minimizing battery failures such as terminal breakage or poor electrical contact.  
The tool body is separated into the upper and lower housings at the foot of handle portion where the housings are jointed with vibration absorbing cushion rubbers.

